

## California Chapter 2

INCORPORATED IN CALIFORNIA

American Academy of Pediatrics

DEDICATED TO THE HEALTH OF ALL CHILDREN<sup>®</sup>

San Luis Obispo - Santa Barbara - Ventura - Kern - Los Angeles - San Bernardino - Riverside



Children's  
Hospital  
LOS ANGELES<sup>®</sup>



# From Screening To Treatment: A Case-Based Exploration Of Pediatric Anxiety And Depression

## Event Location

The Saban Research Institute

Across from CHLA

4650 W Sunset Blvd, Los Angeles, CA, 90027

## Event Date

Tuesday, March 11, 2025

3:00 PM to 7:00 PM

## Event Cost

In-Person Attendance: \$50

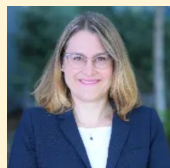
Virtual Attendance: \$60

(Members receive free parking!)



We are excited to invite you to a groundbreaking event focused on the latest topics in children's mental health care and pediatric psychiatry. This one-of-a-kind conference, hosted by Children's Hospital Los Angeles (CHLA) and the AAP-CA2, is offering an exclusive opportunity to learn from experts in the field. This educational event will feature expert speakers, interactive discussions, and the latest insights into mental health practices for children and adolescents. Plus, enjoy food and drinks while connecting with fellow pediatric professionals.

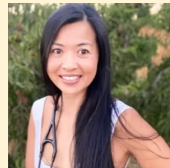
## Speakers



Christine  
Mirzaian, MD



Stephanie  
Marcy, PhD



Lingie  
Chiu, MD



Melissa  
Ruiz, MD, MPH



Emily  
Wood, MD, PhD

**REGISTER  
HERE**



## Topics

- Anxiety/Depression Pediatric Screening Tools
- Lifestyle Medicine Treatments/Pharmacological Strategies
- Case-Based Review With Q&A

### CME Accreditation Statement

This activity has been planned and implemented in accordance with the accreditation requirements and policies of the Accreditation Council for Continuing Medical Education (ACCME) through the joint providership of PeerPoint Medical Education Institute and the American Academy of Pediatrics – CA2. PeerPoint Medical Education Institute is accredited by the ACCME to provide continuing medical education for physicians. PeerPoint Medical Education Institute designates the hybrid format for this educational activity for a maximum of 3.5 AMA PRA Category 1 Credits. Physicians should only claim credit commensurate with the extent of their participation in the activity. Financial Disclosures: All planners, speakers, reviewers or staff report no relationships to disclose.